

---

# MCAS Performance Spring 2008

---

Newburyport Public Schools  
October 20, 2008

---

# 2008 MCAS Results

- Results are mixed comparing 2007 scores to 2008 scores
  - Grade 5 cohort scored significantly higher in both ELA and Math
  - Grade 6 scores improved significantly in both Math and ELA
  - Grade 7 Math scores declined year to year, but the cohort improved
-

---

# 2008 MCAS Results

- Grade 8 Science scores continue to improve
  - Grade 9 Physics scores have reached a new high
  - Grade 10 English and Math continue to be strong
  - We continue to observe relatively low scores in ELA and Math in the early grades – this is of significant concern
-

# Reading & English Language Arts

Percent (%) of Students Scoring

A&P (Advanced/Proficient) or W (Warning/Failed)

%	2003		2004		2005		2006		2007		2008	
	A&P	W	A&P	W	A&P	W	A&P	W	A&P	W	A&P	W
Grade 3	71	2	69	1	75	1	68	5	68	5	65	7
Grade 4	62	3	62	4	46	7	55	5	57	9	43	11
Grade 7	78	1	85	3	84	2	81	1	84	2	76	2
Grade 10	75	7	83	5	81	4	84	5	90	2	91	2

%	2006		2007		2008	
	A&P	W	A&P	W	A&P	W
Grade 5	62	4	71	3	73	5
Grade 6	83	3	64	3	83	2
Grade 8	90	2	89	3	87	3

# Mathematics

Percent (%) of Students Scoring  
A&P (Advanced/Proficient) or W (Warning/Failed)

%	2003		2004		2005		2006		2007		2008	
	A&P	W	A&P	W	A&P	W	A&P	W	A&P	W	A&P	W
Grade 4	38	13	49	12	34	15	45	9	49	10	47	17
Grade 6	64	8	39	18	37	23	29	26	42	20	60	10
Grade 8	57	17	44	22	58	15	36	21	53	12	67	10
Grade 10	68	15	78	11	85	5	80	7	92	2	86	3

%	2006		2007		2008	
	A&P	W	A&P	W	A&P	W
Grade 3	57	10	63	15	58	10
Grade 5	22	37	56	13	63	12
Grade 7	37	19	67	10	48	17

# Science and Technology/Engineering

## Percent (%) of Students Scoring A&P (Advanced/Proficient) or W (Warning/Failed)

%	2003		2004		2005		2006		2007		2008	
	A&P	W	A&P	W	A&P	W	A&P	W	A&P	W	A&P	W
Grade 5	58	5	59	4	49	5	39	8	67	1	49	8
Grade 8	37	16	46	19	46	9	28	12	45	10	55	8
Grade 9 Physics			-	-	-	-	-	-	74	4	82	2

# Reading & English Language Arts

%	2002		2003		2004		2005		2006		2007		2008	
	A & P	W	A & P	W	A & P	W	A & P	W	A & P	W	A & P	W	A & P	W
Grade 3 Reading	73	1	71	2	69	1	75	1	68	5	68	5	65	7
Grade 4 ELA	55	4	62	3	62	4	46	7	55	5	57	9	43	11
Grade 5 ELA	-	-	-	-	-	-	-	-	62	4	71	3	73	5
Grade 6 ELA	-	-	-	-	-	-	-	-	83	3	64	3	83	2
Grade 7 ELA	79	3	78	1	85	3	84	2	81	1	84	2	76	2
Grade 8 ELA	-	-	-	-	-	-	-	-	90	2	89	3	87	3
Grade 9	-	-	-	-	-	-	-	-	-	-	-	-	-	-
Grade 10 ELA	77	3	75	7	83	5	81	4	84	5	90	2	92	2

Percentage: Advanced & Proficient, also Warning/Failed

# Mathematics

%	2002		2003		2004		2005		2006		2007		2008	
	A & P	Warn	A & P	Warn	A & P	Warn	A & P	Warn	A & P	Warn	A & P	Warn	A & P	Warn
Grade 3	-	-	-	-	-	-	-	-	57	10	63	15	58	10
Grade 4	42	12	38	13	49	12	34	15	45	9	49	10	47	17
Grade 5	-	-	-	-	-	-	-	-	22	37	56	13	63	12
Grade 6	44	18	64	8	39	18	37	23	29	26	42	20	60	10
Grade 7	-	-	-	-	-	-	-	-	37	19	67	10	48	17
Grade 8	56	14	57	17	44	22	58	15	36	21	53	12	67	10
Grade 9	-	-	-	-	-	-	-	-	-	-	-	-	-	-
Grade 10	60	12	68	15	78	11	85	5	80	7	92	2	87	3

Percentage: of Advanced & Proficient, also Warning/Failed

# Science and Technology/Engineering

%	2003		2004		2005		2006		2007		2008	
	A & P	Warn	A & P	Warn	A & P	Warn	A & P	Warn	A & P	Warn	A & P	Warn
<b>Grade 5</b>	58	5	59	4	49	5	39	8	67	1	49	8
<b>Grade 6</b>	-	-	-	-	-	-	-	-	-	-	-	-
<b>Grade 7</b>	-	-	-	-	-	-	-	-	-	-	-	-
<b>Grade 8</b>	37	16	46	19	46	9	28	12	45	10	55	8
<b>Grade 9 Physics</b>	-	-	-	-	-	-	-	-	74	4	82	2
<b>Grade 10</b>	-	-	-	-	-	-	-	-	-	-	76	2

Percentage: Advanced & Proficient, also Warning/Failed

# Reading & English Language Arts

% of Students Scoring in Adv/Proficient and Warning	Newburyport 2008		State 2008		Difference	
	A&P	Warn	A&P	Warn	A&P	Warn
Grade 3	65	6	55	11	+10	-5
Grade 4	44	11	49	13	-5	-2
Grade 5	74	5	61	9	+13	-4
Grade 6	84	2	67	8	+17	-6
Grade 7	76	2	69	8	+7	-6
Grade 8	88	2	75	7	+13	-5
Grade 10	92	2	75	4	+17	-2

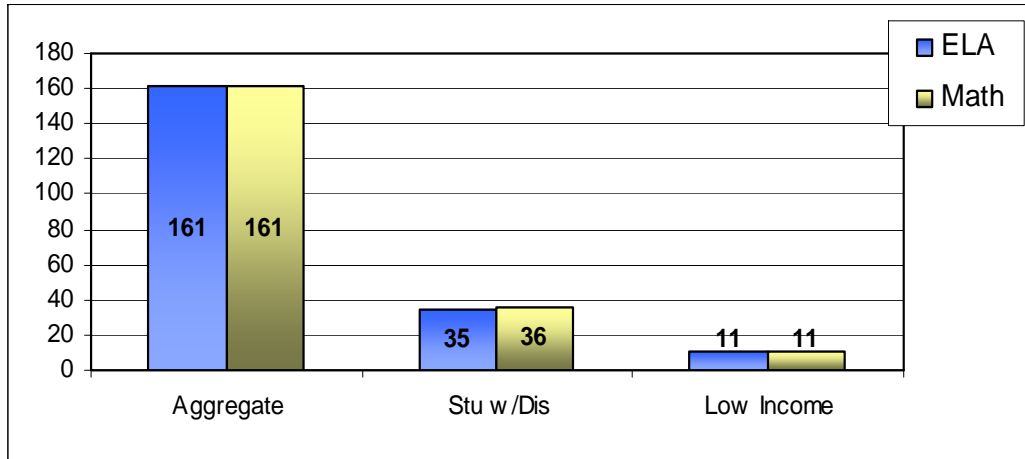
# Mathematics

% of Students Scoring in Adv/Proficient and Warning	Newburyport 2008		State 2008		Difference	
	A&P	Warn	A&P	Warn	A&P	Warn
<b>Grade 3</b>	<b>58</b>	<b>9</b>	<b>61</b>	<b>14</b>	<b>-3</b>	<b>-5</b>
<b>Grade 4</b>	<b>47</b>	<b>17</b>	<b>49</b>	<b>13</b>	<b>-2</b>	<b>+4</b>
<b>Grade 5</b>	<b>63</b>	<b>12</b>	<b>52</b>	<b>17</b>	<b>+11</b>	<b>-5</b>
<b>Grade 6</b>	<b>60</b>	<b>10</b>	<b>56</b>	<b>18</b>	<b>+4</b>	<b>-8</b>
<b>Grade 7</b>	<b>49</b>	<b>17</b>	<b>47</b>	<b>24</b>	<b>+2</b>	<b>-7</b>
<b>Grade 8</b>	<b>70</b>	<b>8</b>	<b>49</b>	<b>24</b>	<b>21</b>	<b>-16</b>
<b>Grade 10</b>	<b>87</b>	<b>3</b>	<b>72</b>	<b>9</b>	<b>+15</b>	<b>-6</b>

# Science and Technology/Engineering

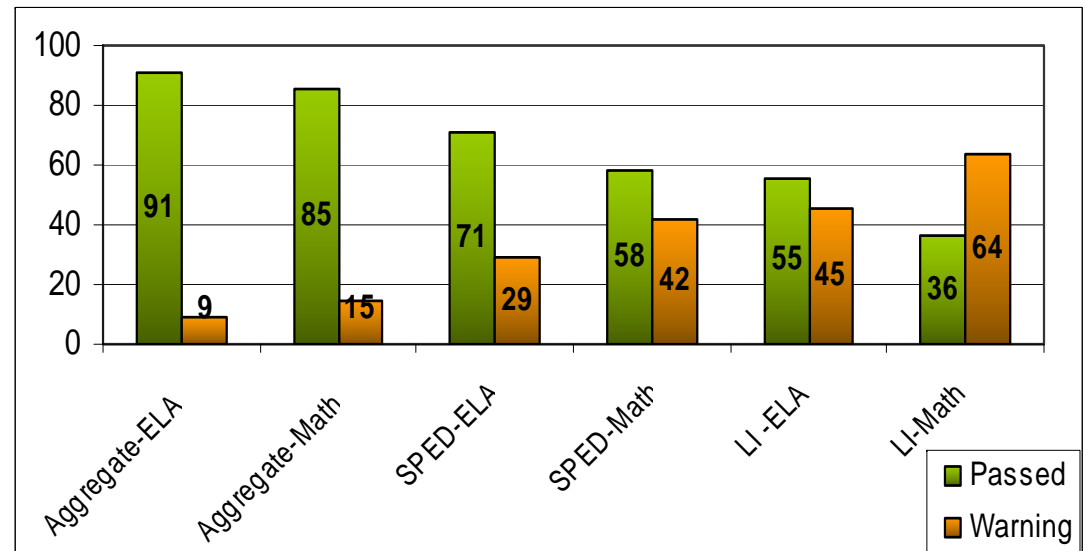
% of Students Scoring in Adv/Proficient and Warning	Newburyport 2008		State 2008		Difference	
	A&P	Warn	A&P	Warn	A&P	Warn
<b>Grade 5</b>	<b>49</b>	<b>7</b>	<b>50</b>	<b>12</b>	<b>-1</b>	<b>-5</b>
<b>Grade 8</b>	<b>57</b>	<b>6</b>	<b>39</b>	<b>22</b>	<b>+18</b>	<b>-16</b>
<b>Grade 9 Physics</b>	<b>82</b>	<b>2</b>	<b>55</b>	<b>15</b>	<b>+27</b>	<b>-13</b>
<b>Grade 10</b>	<b>76</b>	<b>2</b>	<b>57</b>	<b>12</b>	<b>+19</b>	<b>-10</b>

# 2008 MCAS – Grade 4 ELA & Math

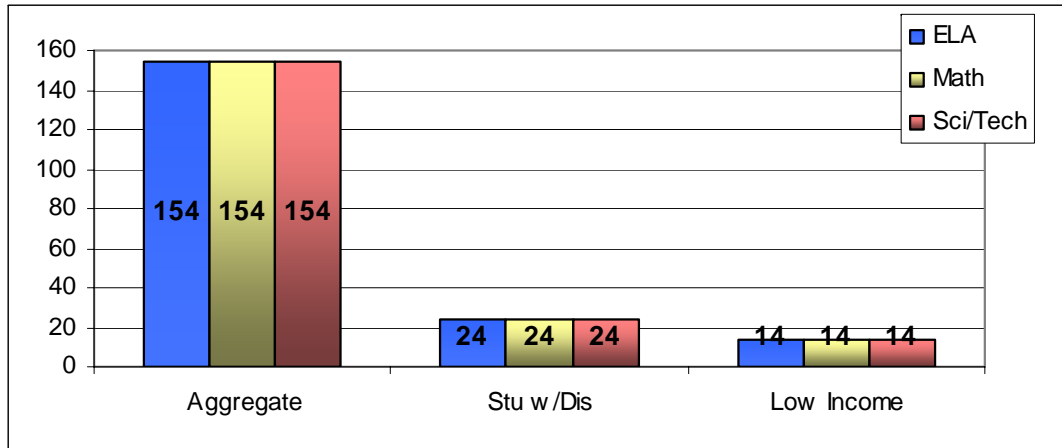


The aggregate is the total number of students (161) tested in MCAS at Grade 4. The number of students within the subgroups of *Students w/Disabilities* (35/36) and *Low Income* (11) are also identified.

The percentage (%) of performance levels of Passing (*includes Proficient through Needs Improvement*) and Warning are shown below. Within the subgroups of *Students with Disabilities* and *Low Income* there are four (4) students falling within both subgroups.

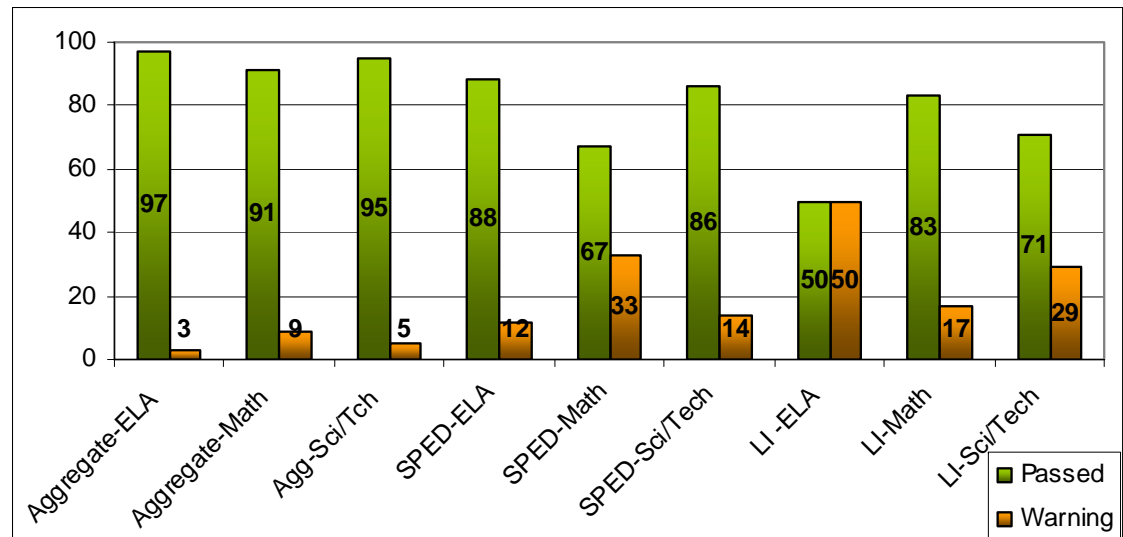


# 2008 MCAS – Grade 5 ELA, Math, & Sci/Tech

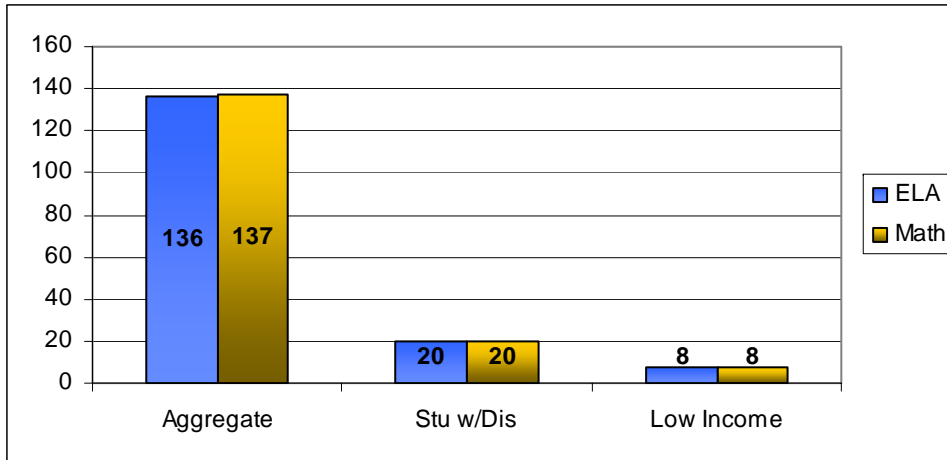


The aggregate is the total number of students (154) tested in MCAS at Grade 5. The number of students within the subgroups of *Students w/Disabilities* (24) and *Low Income* (14) are also identified.

The percentage (%) of performance levels of Passing (*includes Proficient through Needs Improvement*) and Warning are shown below. Within the subgroups of *Students with Disabilities* and *Low Income* there are seven (7) students falling within both subgroups.

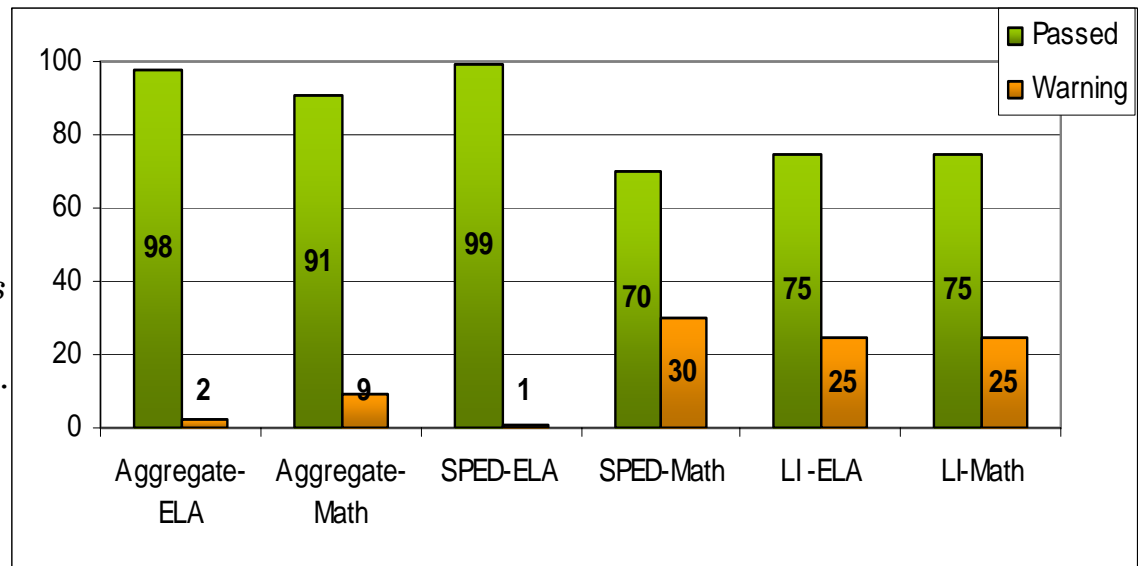


# 2008 MCAS – Grade 6 ELA & Math

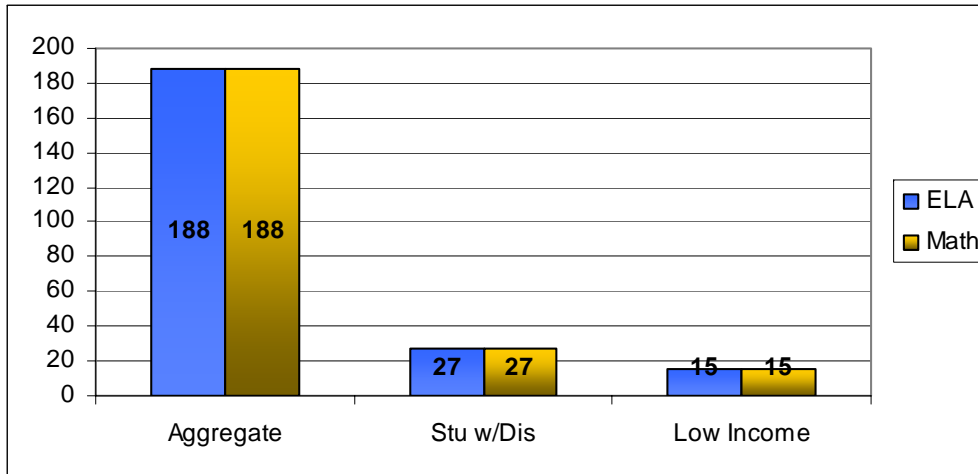


The aggregate is the total number of students (136/137) tested in MCAS at Grade 6. The number of students within the subgroups of *Students w/Disabilities* (20) and *Low Income* (8) are also identified.

The percentage (%) of performance levels of Passing (*includes Proficient through Needs Improvement*) and Warning are shown below. Within the subgroups of *Students with Disabilities* and *Low Income* there are three (3) students falling within both subgroups.

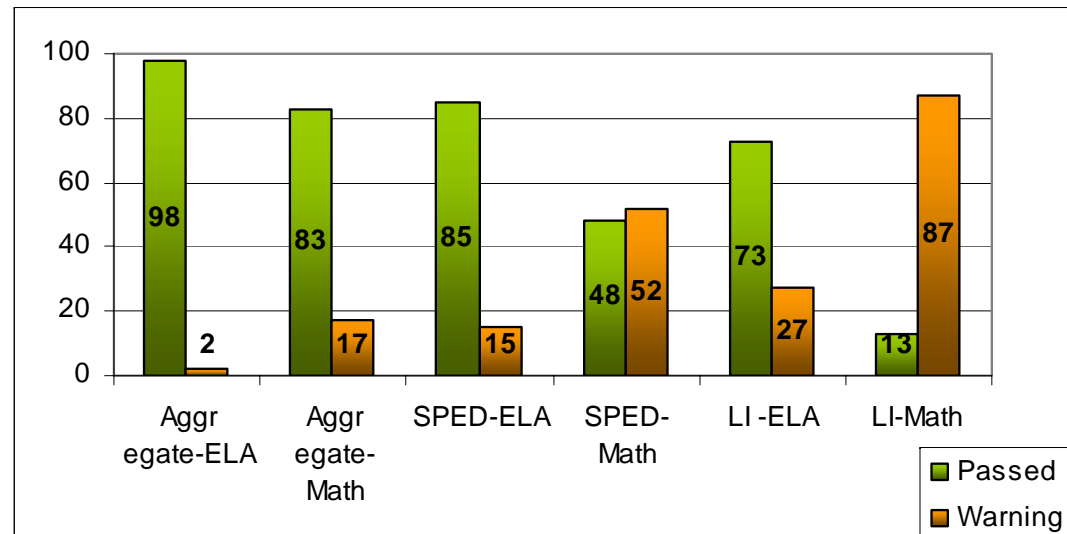


# 2008 MCAS – Grade 7 ELA & Math

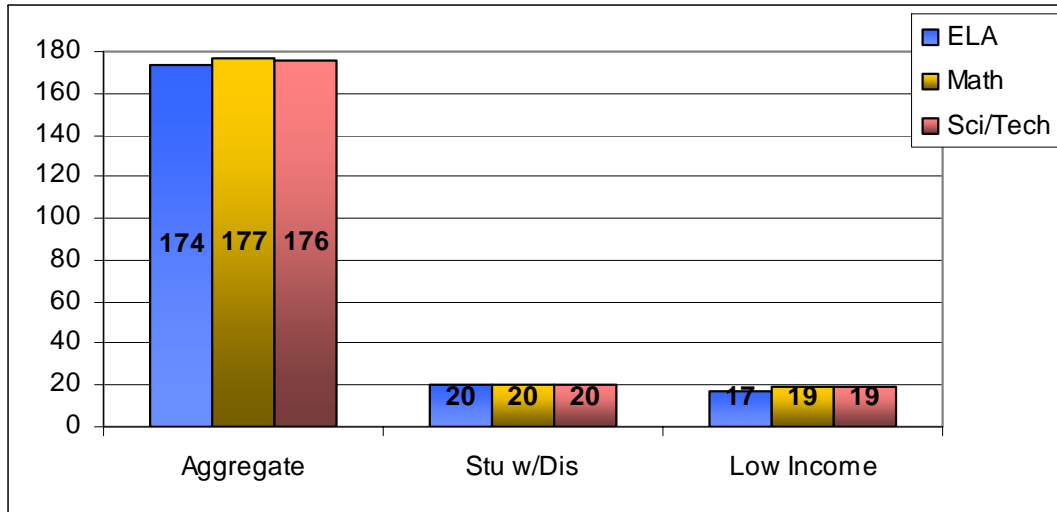


The aggregate is the total number of students (188) tested in MCAS at Grade 7. The number of students within the subgroups of *Students w/Disabilities* (27) and *Low Income* (15) are also identified.

The percentage (%) of performance levels of Passing (*includes Proficient through Needs Improvement*) and Warning are shown below. Within the subgroups of *Students with Disabilities* and *Low Income* there are eight (8) students falling within both subgroups.

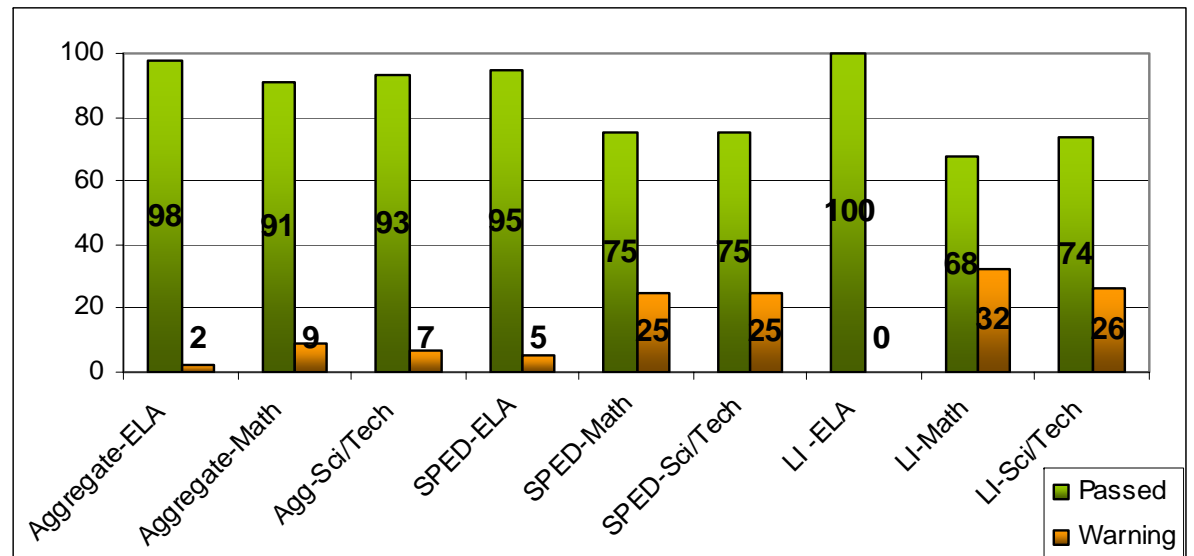


# 2008 MCAS – Grade 8 ELA, Math & Sci/Tech

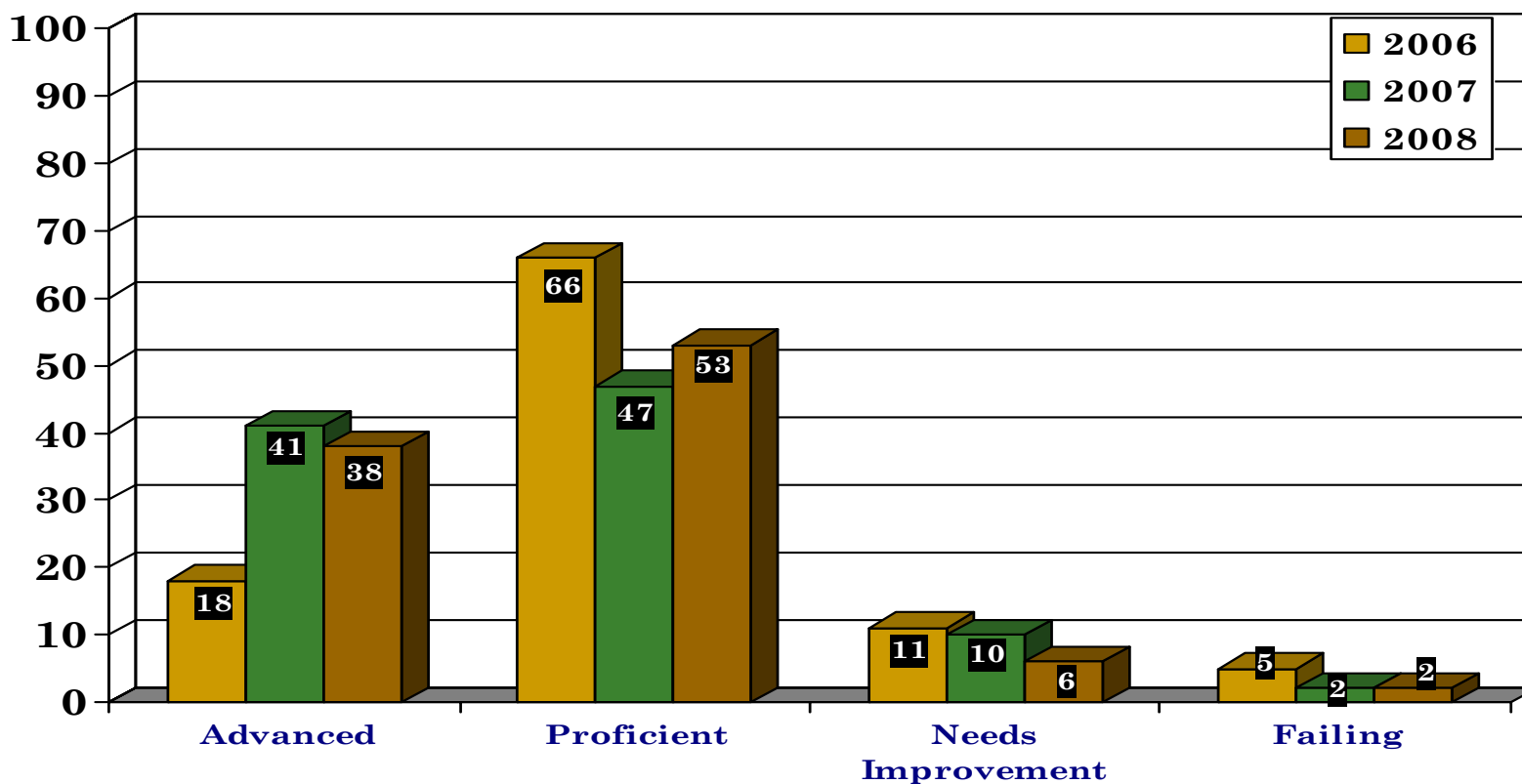


The aggregate is the total number of students (174/177/176) tested in MCAS at Grade 8. The number of students within the subgroups of *Students w/Disabilities* (20) and *Low Income* (17/19) are also identified.

The percentage (%) of performance levels of Passing (*includes Proficient through Needs Improvement*) and Warning are shown below. Within the subgroups of *Students with Disabilities* and *Low Income* there are four (4) students falling within both subgroups.

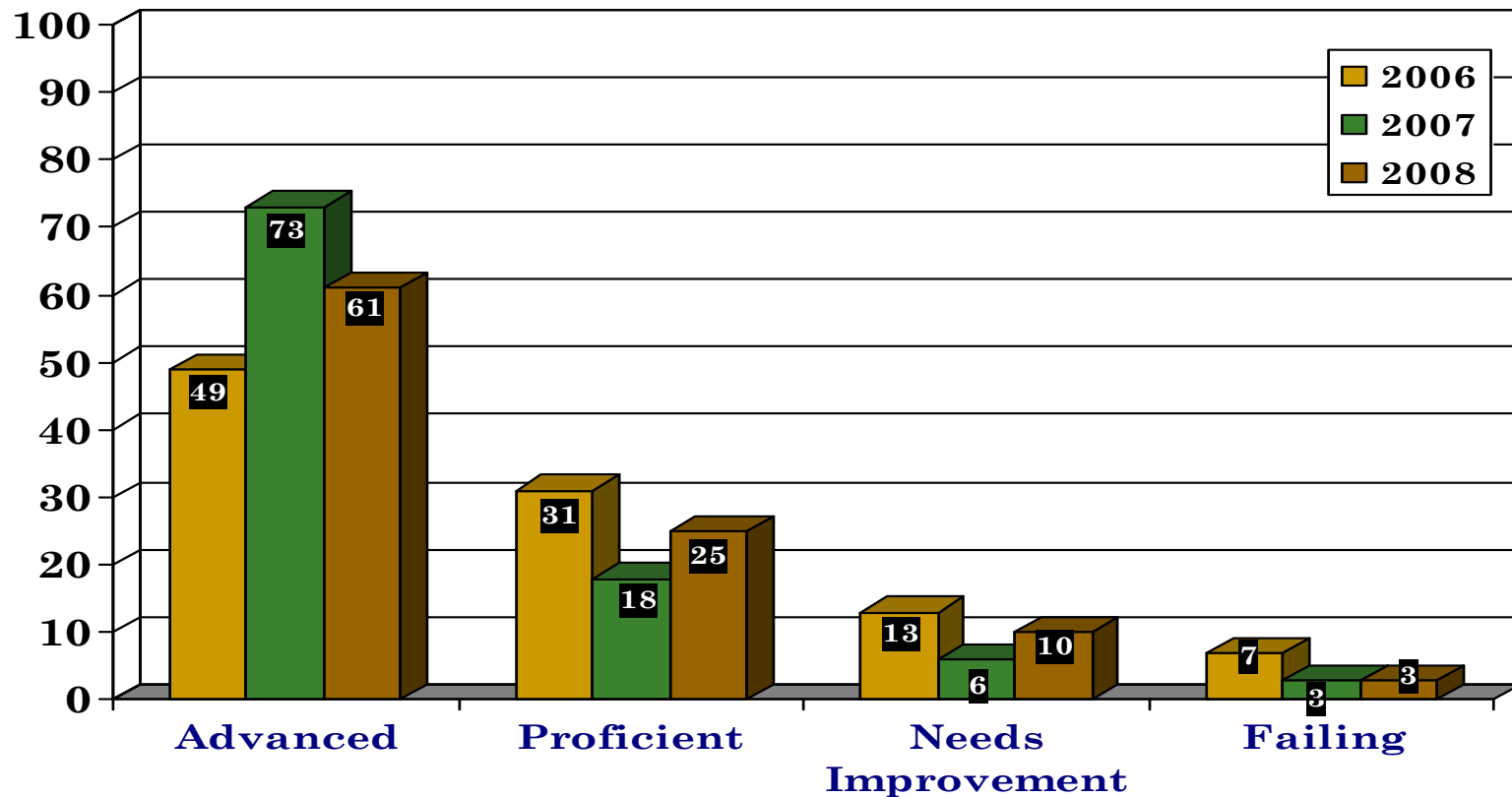


# Spring 2008 MCAS – English Language Arts Grade 10 Three Year Comparison of District Performance Level Results



# Spring 2008 MCAS – Mathematics Grade 10

## Three Year Comparison of District Performance Level Results



# Community Rankings Grade 10 ELA, Math, & Science/Tech Eng

## ENGLISH LANGUAGE ARTS

**Newburyport 43**

### Comparative Communities

Bedford	63
Burlington	81
Scituate	71
Swampscott	81
Wakefield	101

### Geographic Proximity

Amesbury	149
Georgetown	52
Ipswich	63
Pentucket	81
Triton	113

### Aspiration Communities

Holliston	33
Medfield	5
Needham	12
Wellesley	16
Winchester	26

## MATHEMATICS

**Newburyport 64**

### Comparative Communities

Bedford	54
Burlington	101
Scituate	72
Swampscott	124
Wakefield	54

### Geographic Proximity

Amesbury	164
Georgetown	51
Ipswich	79
Pentucket	114
Triton	124

### Aspiration Communities

Holliston	27
Medfield	5
Needham	17
Wellesley	27
Winchester	27

## SCIENCE/TECH ENG

**Newburyport 64**

### Comparative Communities

Bedford	64
Burlington	57
Scituate	122
Swampscott	239
Wakefield	28

### Geographic Proximity

Amesbury	83
Georgetown	122
Ipswich	122
Pentucket	194
Triton	109

### Aspiration Communities

Holliston	15
Medfield	7
Needham	17
Wellesley	79
Winchester	17

Reference Boston Globe \*Communities Rank among 312 High Schools

---

# Going Forward

- Continue focus on district initiatives to support student achievement
  - Implement Middle School Action Plan
  - Improve instructional effectiveness
    - Outside consultants provide coursework and technical assistance
      - Kathie Heap (Literacy), Susan Craig (Inclusion)
    - Inside Coach/Specialist provide embedded professional development
      - Sue Jasiak (K - 2 Literacy), Graceann Remmes (3 – 6 Literacy), Judy Wojtczak ( K – 8 Math)
    - Improve effectiveness of instructional supervision
    - Build and implement common formative assessments
-

---

# We Are Moving in a Systematic Way to Create Sustainable Improvement

- Sustaining interventions that have been put in place to support MCAS achievement, including EPP (Educational Proficiency Plan)
  - Building consensus curriculum that includes frequent common assessments K-12
  - Strengthening math transitions
  - Continuing to build a comprehensive literacy model K-6
  - Expanding literacy initiative to grades 7 & 8
  - Continuing to develop a district-wide literacy focus
  - Implementing inclusionary practices, making the curriculum accessible to all students
-

---

# Educational Proficiency Plan (EPP) Starts with Class of 2010

The EPP:

- Is written for students who score between 220-238 (Needs Improvement) on the MCAS
  - Was established to ensure that students receive additional coursework and academic help in the content area(s) in which they are not proficient
  - Requires assessment of student progress toward proficiency as a condition of graduation
-

---

# EPP Required Information

- Student strengths and weaknesses in the content area in which they are not proficient
    - Teacher input
    - MCAS scores
    - District assessments
  - Courses the student will be required to take in Grades 11 and 12 in relevant content area(s)
    - Courses are designed to move students toward proficiency in grades 11 and 12 (not remedial)
  - Assessment administered at least annually to ensure student is progressing toward proficiency in the content area(s)
-